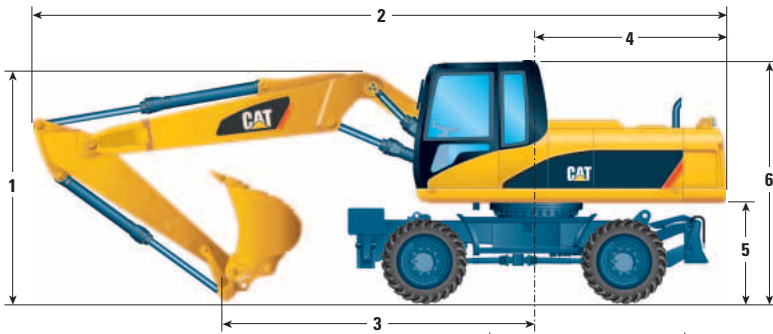


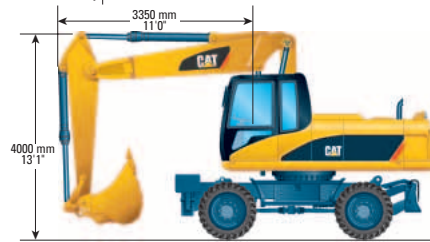
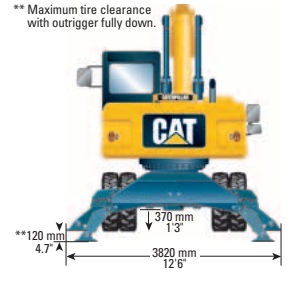
M318D Wheel Excavator

Dimensions

All dimensions are approximate.

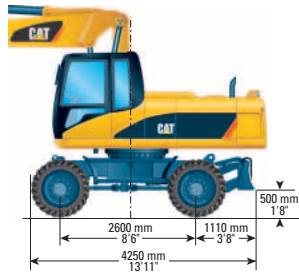


** Maximum tire clearance with outrigger fully down.

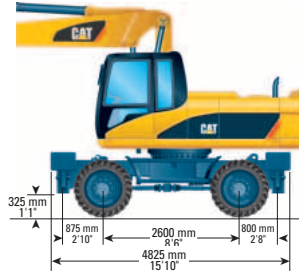


g position
5 m/8'3" stick

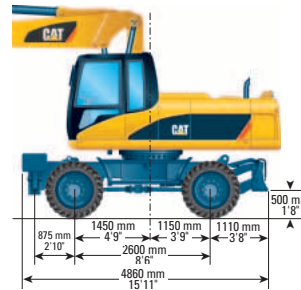
Undercarriage with dozer only



Undercarriage with 2 sets of outriggers



Undercarriage with 1 set of outriggers and dozer



Stick Options

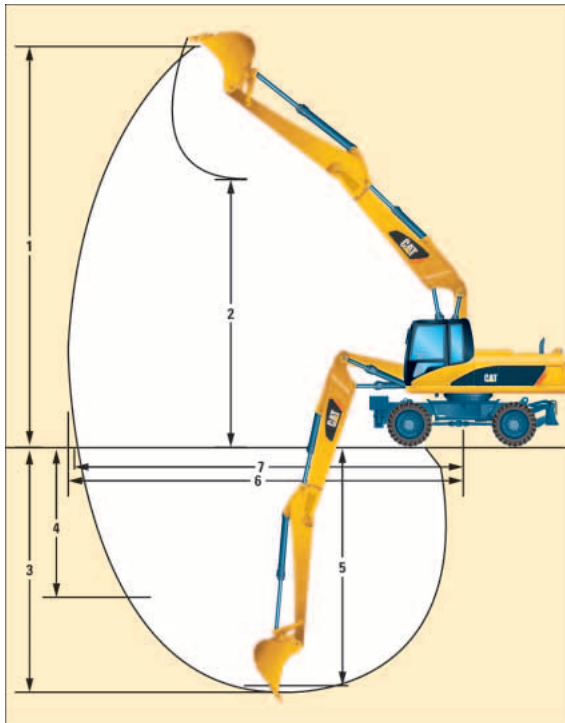
	2.2 m (7'3")		2.5 m (8'3")		2.8 m (9'3")		Industrial Stick 3.3 m (10'10")	
	mm	ft/in	mm	ft/in	mm	ft/in	mm	ft/in
1 Shipping Height								
VA Boom	3170	10'5"	3170	10'5"	3300	10'10"	3330	10'11"
One-piece Boom	3190	10'6"	3210	10'6"	3330	10'11"	3290	10'10"
2 Shipping Length								
VA Boom	8870	29'1"	8850	29'0"	8820	28'11"	8850	29'0"
One-piece Boom	8870	29'1"	8960	29'5"	8950	29'4"	9000	29'6"
3 Support Point								
VA Boom	3920	12'10"	3650	12'0"	3510	11'6"	3270	10'9"
One-piece Boom	3810	12'6"	3490	11'5"	3310	10'10"	3080	10'1"
4 Tail Swing Radius								
VA Boom and One-piece Boom	2500	8'2"	2500	8'2"	2500	8'2"	2500	8'2"
5 Counterweight Clearance								
VA Boom and One-piece Boom	1280	4'2"	1280	4'2"	1280	4'2"	1280	4'2"
6 Cab Height								
VA Boom and One-piece Boom	3170	10'5"	3170	10'5"	3170	10'5"	3170	10'5"

Note: All numbers are approximate
Cab height without Falling Object Guards

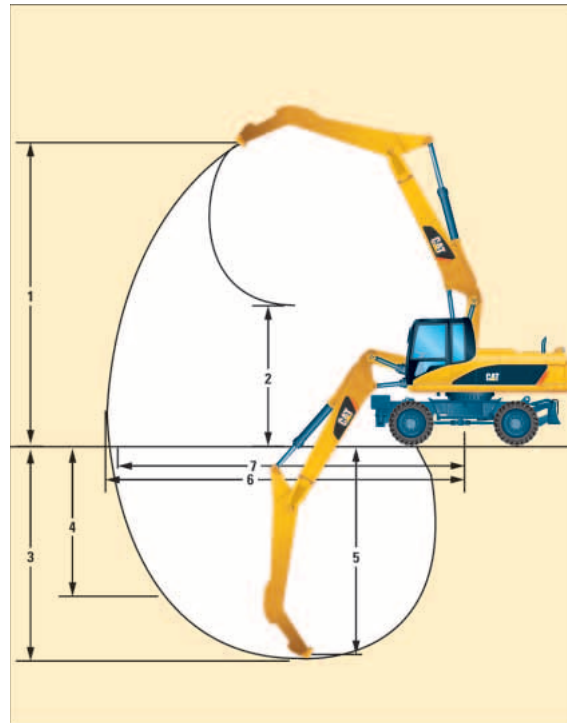
M318D Wheel Excavator

VA Boom and One-piece Boom Working Ranges

2.2 m (7'3"), 2.5 m (8'3"), 2.8 m (9'3") Sticks



3.3 m (10'10") Industrial Stick



	VA Boom				One-piece Boom			
	2.2 m (7'3")	2.5 m (8'3")	2.8 m (9'3")	Industrial Stick* 3.3 m (10'10")	2.2 m (7'3")	2.5 m (8'3")	2.8 m (9'3")	Industrial Stick* 3.3 m (10'10")
Stick Length								
1 Digging Height	9710 mm (31'11")	10 000 mm (32'10")	10 210 mm (33'6")	8620 mm (28'3")	8760 mm (28'9")	9010 mm (29'7")	9170 mm (30'1")	8620 mm (28'3")
2 Dump Height	6700 mm (22'0")	6970 mm (22'11")	7190 mm (23'7")	3550 mm (12'4")	5900 mm (19'4")	6110 mm (20'1")	6270 mm (20'7")	3140 mm (10'4")
3 Digging Depth	5750 mm (18'11")	6060 mm (19'11")	6360 mm (20'11")	5320 mm (17'6")	5700 mm (18'9")	6000 mm (19'8")	6300 mm (20'7")	5250 mm (17'3")
4 Vertical Wall Digging Depth	3220 mm (10'7")	3680 mm (12'1")	3960 mm (13'0")	N/A	2880 mm (9'5")	3340 mm (11'0")	3620 mm (11'11")	N/A
5 Depth 2.5 m (8'3") Straight Clean-up	5538 mm (18'2")	5865 mm (19'3")	6179 mm (20'4")	N/A	5488 mm (18'0")	5805 mm (19'1")	6119 mm (20'1")	N/A
6 Reach	9160 mm (30'1")	9470 mm (31'1")	9760 mm (32'1")	8490 mm (27'11")	9180 mm (30'2")	9490 mm (31'2")	9770 mm (32'1")	8470 mm (27'10")
7 Reach at Ground Level	8970 mm (29'6")	9300 mm (30'7")	9590 mm (31'6")	8290 mm (27'3")	9000 mm (29'7")	9320 mm (30'7")	9600 mm (31'6")	8270 mm (27'2")
Bucket Forces (ISO 6015)	126 kN (28,326 lbf)	126 kN (28,326 lbf)	126 kN (28,326 lbf)	N/A	126 kN (28,326 lbf)	126 kN (28,326 lbf)	126 kN (28,326 lbf)	N/A
Stick Forces (ISO 6015)	102 kN (22,931 lbf)	91 kN (20,458 lbf)	85 kN (19,109 lbf)	N/A	102 kN (22,931 lbf)	91 kN (20,458 lbf)	85 kN (19,109 lbf)	N/A

* Industrial Stick has no bucket linkage. All dimensions refer to sticknose.

Values 1-7 are calculated with bucket and quick coupler with a tip radius of 1599 mm (5'3").





Breakout force values are calculated with heavy lift on (no quick coupler) and a tip radius of 1405 mm (4'7").

M318D Wheel Excavator

Work Tools Matching Guide

When choosing between various work tool models that can be installed onto the same machine configuration, consider work tool application, productivity requirements, and durability. Refer to work tool specifications for application recommendations and productivity information.

		Variable adjustable boom 5260 mm (17'3")									One-piece boom 5350 mm (17'7")											
		Dozer lowered			2 sets of stabilizer lowered			Dozer and stabilizer lowered			Dozer lowered			2 sets of stabilizer lowered			Dozer and stabilizer lowered					
		2200 7'3"	2500 8'3"	2800 9'3"	2200 7'3"	2500 8'3"	2800 9'3"	2200 7'3"	2500 8'3"	2800 9'3"	2200 7'3"	2500 8'3"	2800 9'3"	2200 7'3"	2500 8'3"	2800 9'3"	2200 7'3"	2500 8'3"	2800 9'3"			
Without quick coupler		Stick length (ft/in)																				
Hammers	H115s, H120Cs, H130s																					
Multiprocessor	MP15	CC, CR, PS, S																				
		PP																				
	MP20																					
360° Rotation Shear (boom mounted)	S320																					
	S325																					
360° Rotation Shear (stick mounted)	S320																					
Multi-Grapples	G315B – D																					
	G315B – R																					
	G320B D, R																					
Compactors	CVP75																					
Orange Peel Grapples (4 Tines)	GSH-15B	400 L (0.5 yd³)																				
		500 L (0.67 yd³)																				
		600 L (0.75 yd³)																				
		800 L (1.00 yd³)																				
	GSH-20B	600 L (0.75 yd³)																				
		800 L (1.00 yd³)																				
		1000 L (1.25 yd³)																				

	Recommended		Maximum Material Density 3000 kg/m³ (5,000 lb/yd³)
	Working Range only front		Maximum Material Density 1800 kg/m³ (3,000 lb/yd³)
			Maximum Material Density 1200 kg/m³ (2,000 lb/yd³)

Quick couplers

Pin Grabber Plus
Pin Lock
Standard/Tilting
Wedge Lock

- Working range 360°
- Material density = 1800 kg/m³ (3,000 lb/yd³)
- Contact your Caterpillar dealer for work tool availability and specifications.
- All data is subject to change without notice.

M318D Wheel Excavator

Bucket Specifications

Contact your Caterpillar dealer for special bucket requirements.

Pin-on Buckets

Bucket Type	Width		Weight		Capacity (SAE)		No. of Teeth
	mm	in	kg	lb	m ³	yd ³	
General Purpose	610	24	600	1324	0.57	0.74	3
	762	30	655	1447	0.77	1.01	4
	914	36	738	1630	0.95	1.24	5
	991	39	584	1290	0.74	0.97	4
	1067	42	797	1759	1.17	1.53	5
	1219	48	930	2052	1.39	1.82	6
General Purpose Wide Tip	1372	54	939	2072	1.57	2.05	6
	610	24	631	1393	0.57	0.74	3
	762	30	689	1522	0.77	1.01	4
	914	36	782	1727	0.95	1.24	5
	1067	42	848	1872	1.17	1.53	6
Heavy Duty	1219	48	933	2059	1.39	1.82	7
	1372	54	1007	2223	1.57	2.05	8
	610	24	694	1533	0.54	0.7	3
	762	30	689	1520	0.69	0.9	4
	914	36	790	1743	0.84	1.1	5
Heavy Duty Rock	1067	42	848	1872	1.07	1.4	5
	1219	48	943	2082	1.22	1.6	6
	1372	54	1107	2444	1.38	1.8	6
	610	24	695	1535	0.54	0.7	3
	762	30	778	1718	0.69	0.9	4
Heavy Duty Power	914	36	858	1893	0.84	1.1	5
	1067	42	925	2043	1.07	1.4	5
	1194	47	690	1523	0.93	1.22	5
	1295	51	723	1596	1.03	1.35	5
	914	36	799	1764	0.84	1.1	5
Ditch Cleaning	1067	42	842	1858	0.99	1.3	5
	1219	48	914	2017	1.15	1.5	6
	1524	60	752	1660	0.99	1.3	0
Ditch Cleaning Tilt	1829	72	843	1860	1.24	1.62	0
	2007	79	669	1477	0.70	0.91	0
	1524	60	861	1900	0.86	1.12	0
	1829	72	951	2100	0.96	1.25	0
	2007	79	539	1190	0.57	0.75	0
	2311	91	560	1237	0.62	0.81	0

- All bucket recommendations are subject to material density.
- All data is subject to change without notice.
- Contact your Caterpillar dealer for bucket availability and specifications.