

DIESEL ENGINE

Manufacturer & type	Deutz-BF6M 1015 C
Design	6-cylinder turbocharged
Engine output	337 HP (248 kW)
Nominal speed	1.800 rpm
Displacement	3.7 US gal (12 l)
Cooling system	Water and charge air cooling.
Emission standards	COM II/TIER II
Air filter design	Two-stage filter with safety valve.
Fuel tank	238 US gal (900 l)

SWING SYSTEM

Ring gear	Internally toothed ring gear.
Drive	3-stage planetary gear with integrated multi-disc brake.
Uppercarriage swing speed	0 - 6 rpm

UNDERCARRIAGE

- Front axle: Rigid mounted steering axle in planetary gear design with integrated drum brakes. Max. steering angle 30°.
- Rear axle: Oscillating planetary gear axle with integrated drum brakes and oscillat. axle lock to be engaged if required.

Stabilizers	4-point stabilizers
Twin tires	Solid rubber, elastic tires 14.00 - 24

ELECTRICAL SYSTEM

Operating voltage	24 V
Batteries	2 x 12 V / 143 Ah (to EN)
Lighting	2 uppercarriage-mounted headlamps, 2 boom-mounted and 2 dipperstick-mounted working floodlights. Rear side-marker lamps and direction indicators.
Option	generator system 30 kW

BRAKES

Service brake	Hydraulic single-circuit braking system acting on all four wheel pairs.
Parking brake	Hydraulic disc brake on rear axle also acting on the front axle through the propeller shaft.

TRAVEL DRIVE

- Hydrostatic drive through transfer gear with two infinitely variable axial piston motors and directly mounted travel brake valves.

Travel speed / max. gradeability	7 mp/h (0-11 km/h) / 38%
Turning radius	32.5' (9.9 m)

HYDRAULIC SYSTEM

- Single-circuit hydraulic system with load-sensing and flow-on-demand-controls; optimum use of the available engine output through power management control.
- Regeneration function for lift and stick cylinders.
- Hydraulic oil level sensor provided as standard.
- Separate oil cooler with large cooling surface.
- Hydraulic filter elements incorporated in oil tank.
- Auxiliary pumps: Open circuit for auxiliary consumers.

Max. pump capacity	247.3 US gal (936 l)/min (1.800 rpm)
Max. operating pressure	5220 psi (360 bar)
Hydraulic oil tank	206 US gal (780 l)

OPERATING WEIGHTS

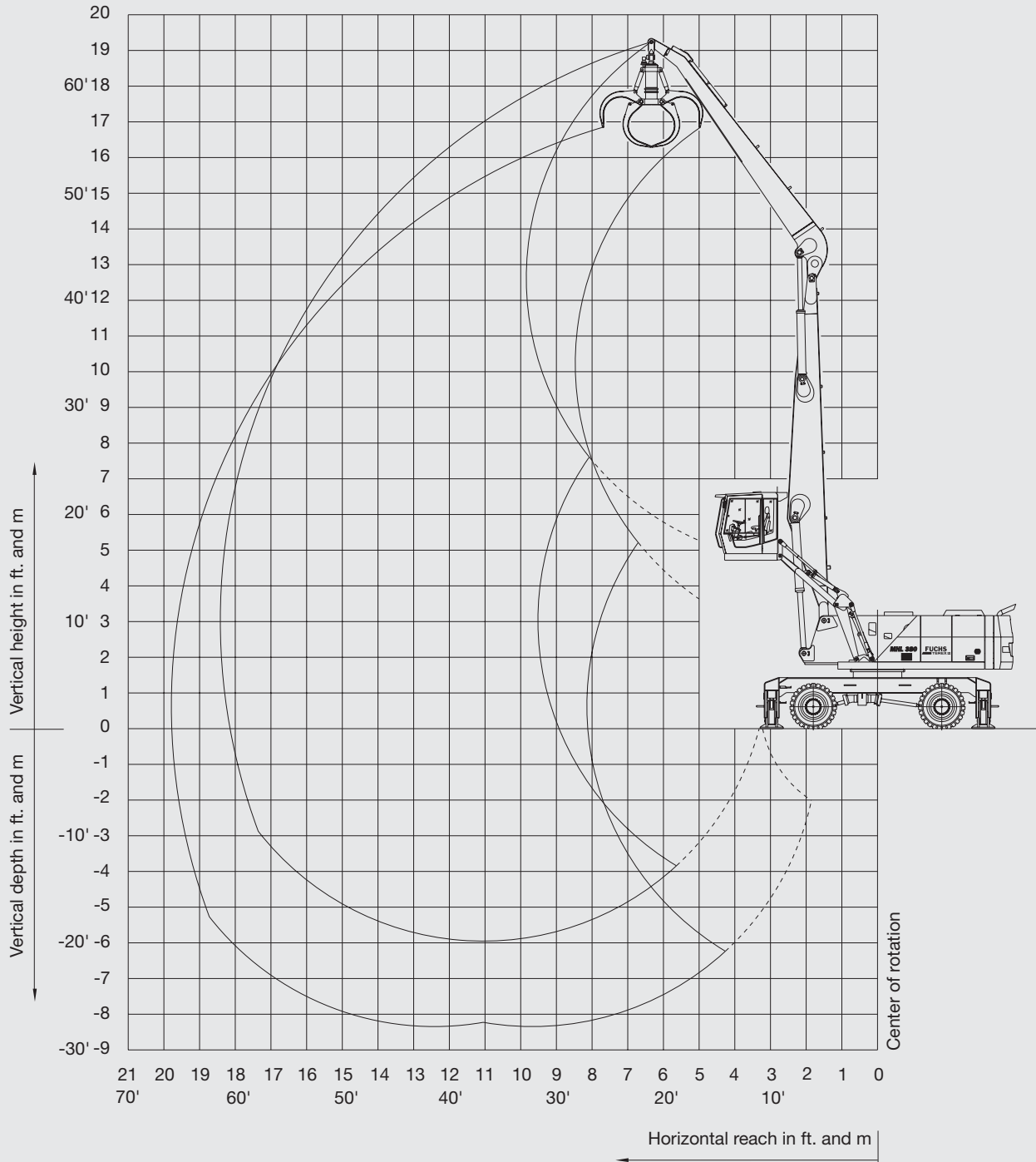
Basic machine including work equipment (including 1.0 m ³ /1.3 yd ³ cactus grab and generator system)	
Reach 60.7' (18.5 m) straight	143,300 lbs (65.000 kg)
Reach 68.9' (21.0 m) straight	144,402 lbs (65.500 kg)
Reach 68.9' (21.0 m) monobloc	145,505 lbs (66.000 kg)



WORKING DIAGRAM

MHL 380 (reach 60.7"/18.5 m)

- Work equipment: box-type boom straight 31.5"/9.6 m, dipperstick 26.3"/8.0 m.





LIFTING CAPACITY

MHL 380 (reach 60.7"/18.5 m)

- Work equipment: box-type boom straight 31.5"/9.6 m, dipperstick 26.2"/8.0 m.

Height in ft.	Undercarriage stabilizers	Reach in ft.								
		20	25	30	35	40	45	50	55	60
60	non-supported			(20,500*)						
	4-pt. supported			20,500* (20,500*)						
55	non-supported				(22,040*)					
	4-pt. supported				22,040* (22,040*)					
50	non-supported				(25,570)	(20,500)				
	4-pt. supported				26,670* (26,670*)	22,040* (22,040*)				
45	non-supported				(26,010)	(20,720)	(16,970)			
	4-pt. supported				26,450* (26,450*)	24,690* (24,690*)	20,940* (20,940*)			
40	non-supported				(26,010)	(20,940)	(16,970)	(14,100)		
	4-pt. supported				26,230* (26,230*)	24,470* (24,470*)	23,140* (23,140*)	18,730* (18,730*)		
35	non-supported				(25,790)	(20,720)	(16,970)	(14,100)	(11,680)	
	4-pt. supported				26,670* (26,670*)	24,910* (24,910*)	23,140* (23,140*)	21,600* (21,600*)	14,330* (14,330*)	
30	non-supported				(25,350)	(20,500)	(16,750)	(13,880)	(11,680)	
	4-pt. supported				27,770* (27,770*)	25,570* (25,570*)	23,580* (23,580*)	21,160* (21,820*)	18,070* (19,180*)	
25	non-supported			(31,300)	(24,690)	(19,840)	(16,530)	(13,660)	(11,680)	
	4-pt. supported			32,400* (32,400*)	29,100* (29,100*)	26,230* (26,230*)	24,250* (24,030*)	20,940* (22,040*)	18,070* (20,500*)	
20	non-supported		(39,900)	(29,980)	(23,800)	(19,400)	(16,090)	(13,440)	(11,460)	(9,700)
	4-pt. supported		41,000* (41,000*)	35,050* (35,050*)	30,860* (30,860*)	27,330* (27,330*)	24,470* (24,690*)	20,720* (22,480*)	17,850* (20,500*)	14,330* (14,330*)
15	non-supported	(52,020)	(37,250)	(28,430)	(22,700)	(18,510)	(15,430)	(13,220)	(11,240)	(9,700)
	4-pt. supported	59,740* (59,740*)	46,510* (46,510*)	38,360* (38,360*)	32,620* (32,620*)	28,660* (28,660*)	23,800* (25,350*)	20,280* (22,700*)	17,630* (20,720*)	15,430* (16,750*)
10	non-supported	(47,170)	(34,610)	(26,690)	(21,600)	(17,850)	(14,990)	(12,780)	(11,020)	(9,470)
	4-pt. supported	68,560* (68,560*)	51,140* (51,140*)	40,780* (40,780*)	33,730* (34,170*)	27,770* (29,760*)	23,360* (26,010*)	20,060* (23,140*)	17,410* (20,500*)	14,990* (17,850*)
5	non-supported	(31,970*)	(32,180)	(25,350)	(20,500)	(17,190)	(14,550)	(12,340)	(10,800)	(9,470)
	4-pt. supported	32,180* (32,180*)	53,350 (53,790*)	40,780 (42,540*)	32,620 (35,490*)	26,890 (30,200*)	23,920 (26,450*)	19,620 (23,140*)	17,190 (20,280*)	14,990 (17,630*)
0	non-supported	(24,910*)	(30,420)	(24,030)	(19,840)	(16,530)	(14,100)	(12,120)	(10,580)	(9,250)
	4-pt. supported	24,910* (24,910*)	51,360 (54,670*)	39,460 (43,330*)	31,710 (35,710*)	26,230 (30,420*)	22,260 (26,230*)	19,400 (22,920*)	16,970 (19,840*)	14,990 (16,530*)
-5	non-supported	(24,690*)	(29,540)	(23,360)	(19,180)	(16,090)	(13,660)	(11,900)	(10,360)	
	4-pt. supported	24,690* (24,690*)	43,650* (43,650*)	38,360 (42,540*)	31,080 (35,490*)	25,790 (29,980*)	22,040 (25,570*)	19,180 (22,260*)	16,750 (18,950*)	
-10	non-supported	(26,230*)	(29,100)	(22,920)	(18,730)	(15,870)	(13,440)	(11,680)	(10,360)	
	4-pt. supported	26,230* (26,230*)	41,220* (41,220*)	37,910 (40,340*)	30,640 (33,950*)	25,570 (28,660*)	21,820 (24,470*)	18,950 (20,720*)	16,750* (16,970*)	
-15	non-supported		(28,880)	(22,700)	(18,510)	(15,650)	(13,440)	(11,680)		
	4-pt. supported		41,880* (41,880*)	37,030* (37,030*)	30,420 (31,080*)	25,350 (26,010*)	21,600 (22,260*)	18,070* (18,070*)		

Height in m	Undercarriage stabilizers	Reach in m								
		6	7,5	9	10,5	12	13,5	15	16,5	18
18	non-supported			(9.3*)						
	4-pt. supported			9.3* (9.3*)						
16.5	non-supported				(10.0*)					
	4-pt. supported				10.0* (10.0*)					
15	non-supported				(11.6)	(9.3)				
	4-pt. supported				12.1* (12.1*)	10.0* (10.0*)				
13.5	non-supported				(11.8)	(9.4)	(7.7)			
	4-pt. supported				12.0* (12.0*)	11.2* (11.2*)	9.5* (9.5*)			
12	non-supported				(11.8)	(9.5)	(7.7)	(6.4)		
	4-pt. supported				11.9* (11.9*)	11.1* (11.1*)	10.5* (10.5*)	8.5* (8.5*)		
10.5	non-supported				(11.7)	(9.4)	(7.7)	(6.4)	(5.3)	
	4-pt. supported				12.1* (12.1*)	11.3* (11.3*)	10.5* (10.5*)	9.8* (9.8*)	6.5* (6.5*)	
9	non-supported				(11.5)	(9.3)	(7.6)	(6.3)	(5.3)	
	4-pt. supported				12.6* (12.6*)	11.6* (11.6*)	10.7* (10.7*)	9.6 (9.9*)	8.2 (8.7*)	
7.5	non-supported			(14.2)	(11.2)	(9.0)	(7.5)	(6.2)	(5.3)	
	4-pt. supported			14.7* (14.7*)	13.2* (13.2*)	11.9* (11.9*)	11.0* (10.9*)	9.5 (10.0*)	8.2 (9.3*)	
6	non-supported		(18.1)	(13.6)	(10.8)	(8.8)	(7.3)	(6.1)	(5.2)	(4.4)
	4-pt. supported		18.6* (18.6*)	15.9* (15.9*)	14.0* (14.0*)	12.4* (12.4*)	11.1 (11.2*)	9.4 (10.2*)	8.1 (9.3*)	6.5* (6.5*)
4.5	non-supported	(23.6)	(16.9)	(12.9)	(10.3)	(8.4)	(7.0)	(6.0)	(5.1)	(4.4)
	4-pt. supported	27.1* (27.1*)	21.1* (21.1*)	17.4* (17.4*)	14.8* (14.8*)	13.0* (13.0*)	10.8 (11.5*)	9.2 (10.3*)	8.0 (9.4*)	7.0 (7.6*)
3	non-supported	(21.4)	(15.7)	(12.2)	(9.8)	(8.1)	(6.8)	(5.8)	(5.0)	(4.3)
	4-pt. supported	31.1* (31.1*)	23.2* (23.2*)	18.5* (18.5*)	15.3 (15.5*)	12.6 (13.5*)	10.6 (11.8*)	9.1 (10.5*)	7.9 (9.3)	6.8 (8.1*)
1.5	non-supported	(14.6*)	(14.6)	(11.5)	(9.3)	(7.8)	(6.6)	(5.6)	(4.9)	(4.3)
	4-pt. supported	14.6* (14.6*)	24.2 (24.4*)	18.5 (19.3*)	14.8 (16.1*)	12.2 (13.7*)	10.4 (12.0*)	8.9 (10.5*)	7.8 (9.2)	6.8 (8.0*)
0	non-supported	(11.3*)	(13.8)	(10.9)	(9.0)	(7.5)	(6.4)	(5.5)	(4.8)	(4.2)
	4-pt. supported	11.3* (11.3*)	23.3 (24.8*)	17.9 (19.7*)	14.4 (16.2*)	11.9 (13.8*)	10.1 (11.9*)	8.8 (10.4*)	7.7 (9.0*)	6.8 (7.5*)
-1.5	non-supported	(11.2*)	(13.4)	(10.6)	(8.7)	(7.3)	(6.2)	(5.4)	(4.7)	
	4-pt. supported	11.2* (11.2*)	19.8* (19.8*)	17.4 (19.3*)	14.1 (16.1*)	11.7 (13.6*)	10.0 (11.6*)	8.7 (10.1*)	7.6 (8.6*)	
-3	non-supported	(11.9*)	(13.2)	(10.4)	(8.5)	(7.2)	(6.1)	(5.3)	(4.7)	
	4-pt. supported	11.9* (11.9*)	18.7* (18.7*)	17.2 (18.3*)	13.9 (15.4*)	11.6 (13.0*)	9.9 (11.1*)	8.6 (9.4*)	7.6 (7.7*)	
-4.5	non-supported		(13.1)	(10.3)	(8.4)	(7.1)	(6.1)	(5.3)		
	4-pt. supported		19.0* (19.0*)	16.8* (16.8*)	13.8 (14.1*)	11.5 (11.8*)	9.8 (10.1*)	8.2* (8.2*)		

REMARKS

The values are stated in lbs. or tons (t). The pump pressure for this table is 5220 psi (360 bar). The values amount to 75 % of the static tipping load or 87 % of the hydraulic lifting force (marked *). When the machine is standing on solid and level ground, these values apply to slewing operations through 360°. The values in brackets apply in the lengthwise direction of the undercarriage. The values specified "non-supported" only apply when the load is hoisted above the front or rear axle.

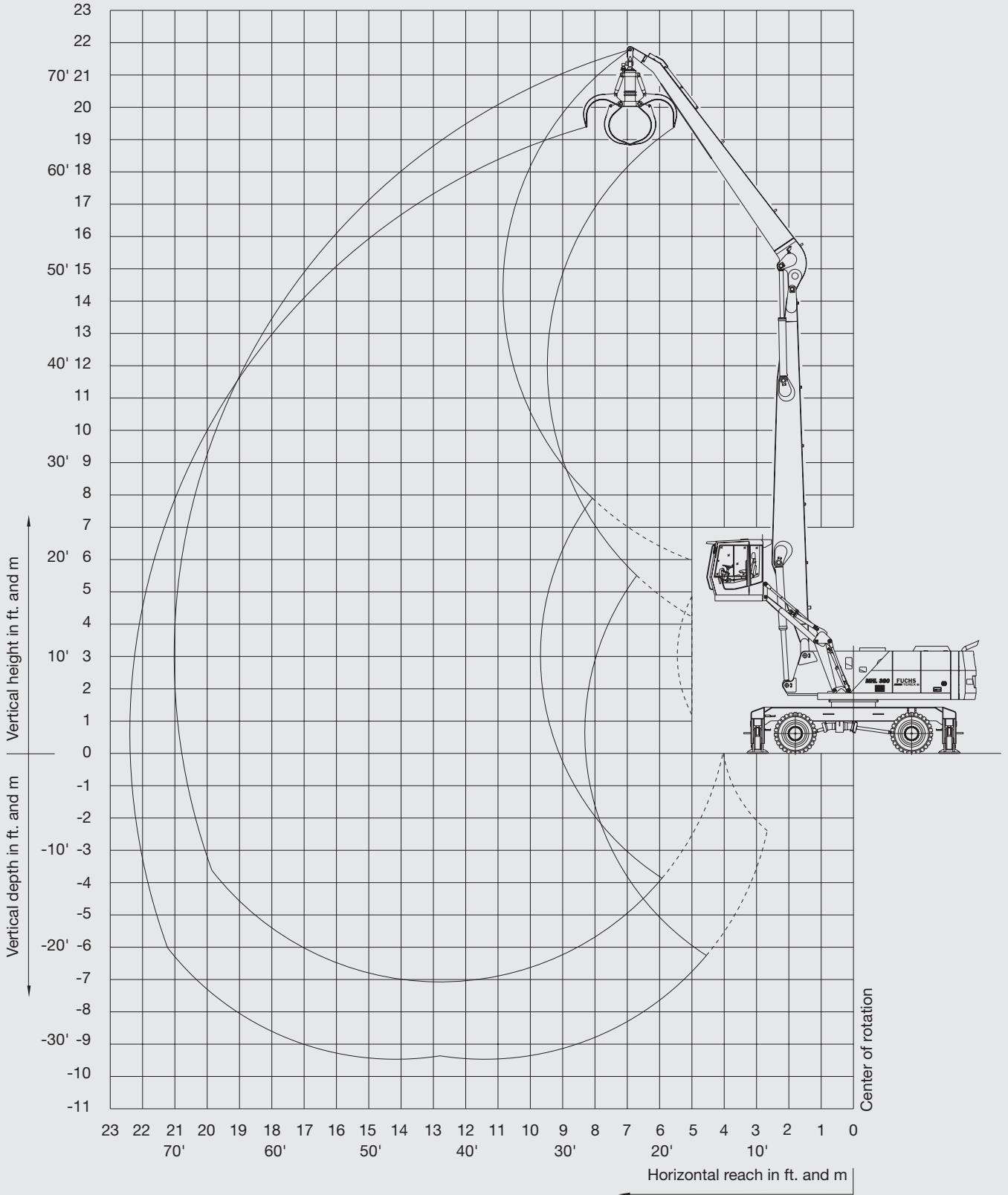
The weight of the attached load hoisting implement (grab, magnet, load hook) must be deducted from the carrying capacity values. If the FUCHS-TEREX quick-attach system is mounted on the boom, carrying capacity values are reduced by 1,763 lbs (800 kg).



WORKING DIAGRAM

MHL 380 (reach 68.9"/21.0 m)

- Work equipment: box-type boom straight 37.2"/11.35 m, dipperstick 29.3"/8.95 m.





LIFTING CAPACITY

MHL 380 (reach 68.9"/21.0 m)

• Work equipment: box-type boom straight 37.2"/11.35 m, dipperstick 29.3"/8.95 m.

Height in ft.	Undercarriage stabilizers	Reach in ft.										
		20	25	30	35	40	45	50	55	60	65	
60	non-supported					(20,500*)	(15,430*)					
	4-pt. supported					20,500* (20,500*)	15,430* (15,430*)					
55	non-supported					(21,160)	(16,970)	(13,880)				
	4-pt. supported					22,480* (22,480*)	20,280* (20,280)	15,210* (15,210*)				
50	non-supported					(21,160)	(17,190)	(14,100)	(11,680)			
	4-pt. supported					22,040* (22,040*)	20,500* (20,500*)	19,180* (19,180*)	13,000* (13,880*)			
45	non-supported					(21,160)	(17,410)	(14,330)				
	4-pt. supported					22,040* (22,040*)	20,500* (20,500*)	19,180* (19,180*)	17,850* (17,850*)			
40	non-supported					(21,160)	(17,190)	(14,100)	(11,900)			
	4-pt. supported					22,260* (22,260*)	20,720* (20,720*)	19,180* (19,180*)	17,850* (17,850*)	15,650* (15,650*)		
35	non-supported				(25,350*)	(20,720)	(16,970)	(14,100)	(11,680)	(9,700)	(8,150)	
	4-pt. supported				25,350* (25,350*)	22,920* (22,920*)	20,940* (20,940*)	19,400* (19,400*)	17,850* (18,070*)	15,430 (16,750*)	11,020* (11,020*)	
30	non-supported				(25,130)	(20,060)	(16,530)	(13,660)	(11,460)	(9,700)	(8,150)	
	4-pt. supported				26,450* (26,450*)	23,800* (23,800*)	21,600* (21,600*)	19,840* (19,840*)	17,850* (18,070*)	15,430 (16,750*)	13,220* (14,770*)	
25	non-supported		(30,640)		(24,030)	(19,400)	(15,870)	(13,220)	(11,240)	(9,470)	(8,150)	
	4-pt. supported		31,740* (31,740*)		27,770* (27,770*)	24,690* (24,690*)	22,040* (22,040*)	20,080* (20,080*)	17,630 (18,510*)	15,210 (16,970*)	13,220 (15,650*)	
20	non-supported	(50,920*)	(38,360)		(28,880)	(22,700)	(18,510)	(15,210)	(12,780)	(10,800)	(9,250)	(7,930)
	4-pt. supported	50,920* (50,920*)	41,880* (41,880*)	34,610* (34,610*)	29,320* (29,320*)	25,570* (25,570*)	22,920* (22,920*)	20,060 (20,720*)	17,190 (18,730*)	14,990 (16,970*)	13,000 (15,430*)	
15	non-supported	(48,060)	(34,830)	(26,890)	(21,380)	(17,630)	(14,550)	(12,340)	(10,580)	(9,030)	(7,710)	
	4-pt. supported	61,720* (61,720*)	46,070* (46,070*)	37,030* (37,030*)	31,080* (31,080*)	26,670* (26,670*)	22,920* (23,360*)	19,620 (20,940*)	16,970 (18,950*)	14,770 (17,190*)	12,780 (15,430*)	
10	non-supported	(24,250*)	(31,520)	(24,690)	(20,060)	(16,530)	(13,880)	(11,900)	(10,140)	(8,810)	(7,490)	
	4-pt. supported	24,250* (24,250*)	49,600* (49,600*)	39,020* (39,020*)	32,400* (32,400*)	26,450 (27,770*)	22,260 (24,030*)	18,950 (21,380*)	16,530 (18,950*)	14,330 (16,970*)	12,780 (15,210*)	
5	non-supported	(14,330*)	(28,880)	(22,920)	(18,730)	(15,650)	(13,220)	(11,240)	(9,700)	(8,590)	(7,490)	
	4-pt. supported	14,330* (14,330*)	35,930* (35,930*)	38,140 (40,340*)	30,640 (33,060*)	25,450 (28,210*)	21,600 (24,250*)	18,510 (21,360*)	16,090 (18,950*)	14,100 (16,570*)	12,560 (14,990*)	
0	non-supported	(13,440*)	(26,230*)	(21,600)	(17,850)	(14,990)	(12,780)	(11,020)	(9,470)	(8,370)	(7,270)	
	4-pt. supported	13,440* (13,440*)	26,230 (26,230*)	36,590 (40,560*)	29,540 (33,510*)	24,690 (28,210*)	20,940 (24,470*)	18,070 (21,160*)	15,870 (18,730*)	13,880 (16,530*)	12,340 (14,330*)	
-5	non-supported	(14,770*)	(24,250*)	(20,720)	(16,970)	(14,330)	(12,340)	(10,580)	(9,250)	(8,150)	(7,270)	
	4-pt. supported	14,770* (14,770*)	24,250* (24,250*)	35,710 (39,240*)	28,880 (32,620*)	24,030 (27,770*)	20,500 (23,800*)	17,630 (20,940*)	15,430 (18,290*)	13,660 (15,870*)	12,340 (13,660*)	
-10	non-supported	(16,970*)	(24,470*)	(20,060)	(16,530)	(13,880)	(11,900)	(10,360)	(9,030)	(7,930)	(7,050)	
	4-pt. supported	16,970* (16,970*)	24,470* (24,470*)	35,050 (37,250*)	28,210 (31,080*)	23,580 (26,670*)	20,060 (23,140*)	17,410 (20,060*)	15,430 (17,410*)	13,660 (14,990*)	12,340* (12,340*)	
-15	non-supported		(25,570)	(20,060)	(16,310)	(13,660)	(11,680)	(10,140)	(9,030)	(7,930)		
	4-pt. supported		25,570* (25,790*)	34,170* (34,170*)	27,990 (29,100*)	23,360 (24,910*)	19,840 (21,600*)	17,190 (18,730*)	15,210 (15,870*)	13,440* (13,440*)		
-20	non-supported		(20,060)		(16,310)	(13,660)	(11,680)	(10,140)	(9,030)			
	4-pt. supported			29,980* (29,980*)	26,010* (26,010*)	22,260* (22,260*)	19,400* (19,400*)	16,750* (16,750*)	13,880* (13,880*)			

Height in m	Undercarriage stabilizers	Reach in m										
		6	7,5	9	10,5	12	13,5	15	16,5	18	19,5	
18	non-supported					(9,3*)	(7,1*)					
	4-pt. supported					9,3* (9,3*)	7,0* (7,0*)					
16,5	non-supported					(9,6)	(7,7)	(6,3)				
	4-pt. supported					10,2* (10,2*)	9,2* (9,2*)	6,9* (6,9*)				
15	non-supported					(9,6)	(7,8)	(6,4)	(5,3)			
	4-pt. supported					10,0* (10,0*)	9,3* (9,3*)	8,7* (8,7*)	6,3* (6,3*)			
13,5	non-supported					(9,6)	(7,9)	(6,5)	(5,3)			
	4-pt. supported					10,0* (10,0*)	9,3* (9,3*)	8,7* (8,7*)	8,1* (8,1*)			
12	non-supported					(9,6)	(7,8)	(6,4)	(5,4)			
	4-pt. supported					10,1* (10,1*)	9,4* (9,4*)	8,7* (8,7*)	8,1* (8,1*)	7,1* (7,1*)		
10,5	non-supported				(11,5*)	(9,4)	(7,7)	(6,4)	(5,3)	(4,4)	(3,7)	
	4-pt. supported				11,5* (11,5*)	10,4* (10,4*)	9,5* (9,5*)	8,8* (8,8*)	8,1 (8,2*)	7,0 (7,6*)	5,0* (5,0*)	
9	non-supported				(11,4)	(9,1)	(7,5)	(6,2)	(5,2)	(4,4)	(3,7)	
	4-pt. supported				12,0* (12,0*)	10,8* (10,8*)	9,8* (9,8*)	9,0* (9,0*)	8,1 (8,2*)	7,0 (7,6*)	6,0 (6,7*)	
7,5	non-supported		(13,9)		(10,9)	(8,8)	(7,2)	(6,0)	(5,1)	(4,3)	(3,7)	
	4-pt. supported		14,4* (14,4*)		12,6* (12,6*)	11,2* (11,2*)	10,0* (10,0*)	9,2* (9,2*)	8,0 (8,4*)	6,9 (7,7*)	6,0 (7,1*)	
6	non-supported	(23,1*)	(17,4)		(13,1)	(10,3)	(8,4)	(6,9)	(5,8)	(4,9)	(3,6)	
	4-pt. supported	23,1* (23,1*)	19,0* (19,0*)	15,7* (15,7*)	13,3* (13,3*)	11,6* (11,6*)	10,4* (10,4*)	9,1 (9,4*)	7,8 (8,5*)	6,8 (7,7*)	5,9 (7,0*)	
4,5	non-supported	(21,8)	(15,8)	(12,2)	(9,7)	(8,0)	(6,6)	(5,6)	(4,8)	(4,1)	(3,5)	
	4-pt. supported	28,0* (28,0*)	20,9* (20,9*)	16,8* (16,8*)	14,1* (14,1*)	12,1* (12,1*)	10,4 (10,6*)	8,9 (9,5*)	7,7 (8,6*)	6,7 (7,8*)	5,8 (7,0*)	
3	non-supported	(11,0*)	(14,3)	(11,2)	(9,1)	(7,5)	(6,3)	(5,4)	(4,6)	(4,0)	(3,4)	
	4-pt. supported	11,0* (11,0*)	22,5* (22,5*)	17,7* (17,7*)	14,7* (14,7*)	12,0 (12,6*)	10,1 (10,9*)	8,6 (9,7*)	7,5 (8,6*)	6,5 (7,7*)	5,8 (6,9*)	
1,5	non-supported	(6,5*)	(13,1)	(10,4)	(8,5)	(7,1)	(6,0)	(5,1)	(4,4)	(3,9)	(3,4)	
	4-pt. supported	6,5* (6,5*)	16,3* (16,3*)	17,3 (18,3*)	13,9 (15,0*)	12,0 (12,8*)	9,8 (11,0*)	8,4 (9,7*)	7,3 (8,6*)	6,4 (7,7*)	5,7 (6,8*)	
0	non-supported	(6,1*)	(11,9*)	(9,8)	(8,1)	(6,8)	(5,8)	(5,0)	(4,3)	(3,8)	(3,3)	
	4-pt. supported	6,1* (6,1*)	11,9* (11,9*)	16,6 (18,4*)	13,4 (15,2*)	11,2 (12,8*)	9,5 (11,1*)	8,2 (9,6*)	7,2 (8,5*)	6,3 (7,5*)	5,6 (6,5*)	
-1,5	non-supported	(6,7*)	(11,0*)	(9,4)	(7,7)	(6,5)	(5,6)	(4,8)	(4,2)	(3,7)	(3,3)	
	4-pt. supported	6,7* (6,7*)	11,0* (11,0*)	16,2 (17,8*)	13,1 (14,8*)	10,9 (12,6*)	9,3 (10,8*)	8,0 (9,5*)	7,0 (8,3*)	6,2 (7,2*)	5,6 (6,2*)	
-3	non-supported	(7,7*)	(11,1*)	(9,1)	(7,5)	(6,3)	(5,4)	(4,7)	(4,1)	(3,6)	(3,2)	
	4-pt. supported	7,7* (7,7*)	11,1* (11,1*)	15,9 (16,9*)	12,8 (14,1*)	10,7 (12,1*)	9,1 (10,5*)	7,9 (9,1*)	7,0 (7,9*)	6,2 (6,8*)	5,6* (5,6*)	
-4,5	non-supported		(11,6)	(9,1)	(7,4)	(6,2)	(5,3)	(4,6)	(4,1)	(3,6)		
	4-pt. supported		11,7* (11,7*)	15,5* (15,5*)	12,7 (13,2*)	10,6 (11,3*)	9,0 (9,8*)	7,8 (8,5*)	6,9 (7,2*)	6,1* (6,1*)		
-6	non-supported		(9,1)		(7,4)	(6,2)	(5,3)	(4,6)	(4,1)			
	4-pt. supported			13,6* (13,6*)	11,8* (11,8*)	10,1* (10,1*)	8,8* (8,8*)	7,6* (7,6*)	6,3* (6,3*)			

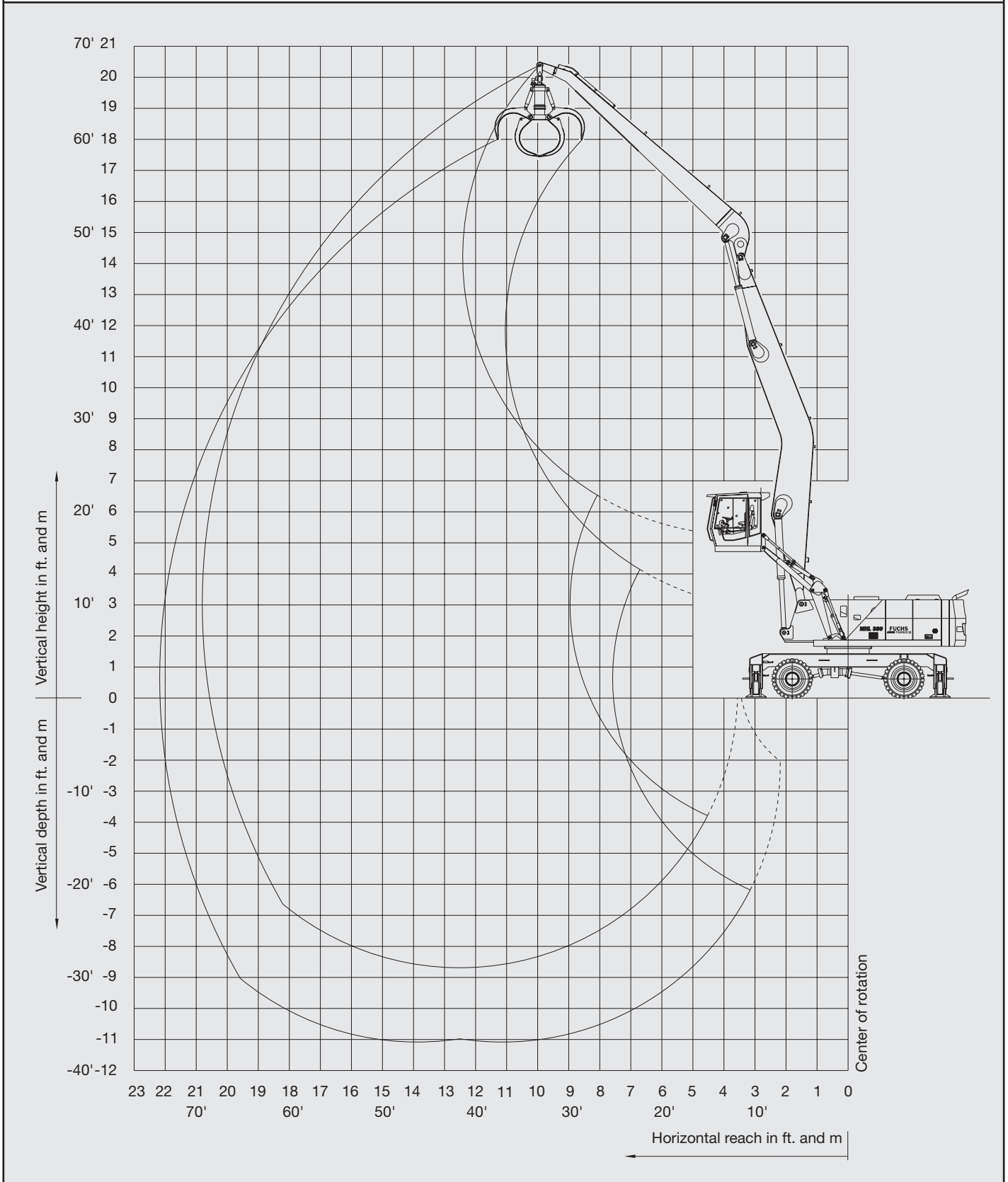
For additional remarks see notes on page 3.



WORKING DIAGRAM

MHL 380 (reach 68.9"/21.0 m)

- Work equipment: box-type boom monobloc 37.2"/11.35 m, dipperstick 29.3"/8.95 m.





LIFTING CAPACITY

MHL 380 (reach 68.9"/21.0 m)

- Work equipment: box-type boom monobloc 37.2"/11.35 m, dipperstick 29.3"/8.95 m.

Height in m	Undercarriage stabilizers	Reach in ft.										
		20	25	30	35	40	45	50	55	60	65	
60	non-supported					(18,070*)						
	4-pt. supported					18,070* (18,070*)						
55	non-supported						(17,190)					
	4-pt. supported						17,850* (17,850*)					
50	non-supported						(17,410)	(14,330)				
	4-pt. supported						17,410* (17,410*)	16,750* (16,750*)				
45	non-supported						(17,410*)	(14,330)	(11,680)			
	4-pt. supported						17,410* (17,410*)	16,530* (16,530*)	15,870* (15,870*)			
40	non-supported						(17,410)	(14,330)	(11,900)	(9,700)		
	4-pt. supported						17,630* (17,630*)	16,750* (16,750*)	15,870* (15,870*)	13,440* (13,440*)		
35	non-supported						(19,400*)	(16,970)	(14,100)	(11,680)	(9,700)	
	4-pt. supported						19,400* (19,400*)	18,070* (18,070*)	16,970* (16,970*)	15,870* (15,870*)	15,210* (15,210*)	
30	non-supported						(20,280*)	(16,530)	(13,660)	(11,460)	(9,700)	(7,930)
	4-pt. supported						20,280* (20,280*)	18,730* (18,730*)	17,190* (17,190*)	16,310* (16,310*)	15,210* (15,210*)	12,560* (12,560*)
25	non-supported						(23,800*)	(19,620)	(16,090)	(13,220)	(9,470)	(7,930)
	4-pt. supported						23,800* (23,800*)	21,380* (21,380*)	19,400* (19,400*)	17,850* (17,850*)	16,530* (16,530*)	15,210* (15,430*)
20	non-supported						(35,490*)	(29,100)	(22,920)	(18,510)	(15,430)	(12,780)
	4-pt. supported						35,490* (35,490*)	29,540* (29,540*)	25,350* (25,350*)	22,480* (22,480*)	20,280* (20,280*)	18,290* (18,290*)
15	non-supported						(46,280)	(35,050)	(26,890)	(21,380)	(17,630)	(14,550)
	4-pt. supported						54,010* (54,010*)	40,340* (40,340*)	32,620* (32,620*)	27,330* (27,330*)	23,800* (23,800*)	20,940* (20,940*)
10	non-supported						(29,540*)	(31,520)	(24,690)	(19,840)	(16,530)	(13,880)
	4-pt. supported						29,540* (29,540*)	44,530* (44,530*)	35,270* (35,270*)	29,100* (29,100*)	24,910* (24,910*)	22,040* (21,820*)
5	non-supported						(17,410*)	(28,430)	(22,700)	(15,430)	(13,000)	(11,240)
	4-pt. supported						17,410* (17,410*)	40,340* (40,340*)	37,250* (37,250*)	30,640* (30,640*)	25,350* (25,790*)	21,380* (22,480*)
0	non-supported						(15,870*)	(26,450)	(21,160)	(17,410)	(14,550)	(12,340)
	4-pt. supported						15,870* (15,870*)	29,100* (29,100*)	36,370* (36,370*)	29,320* (31,520*)	24,470* (26,670*)	20,720* (22,920*)
-5	non-supported						(16,750*)	(25,350)	(20,060)	(16,530)	(13,880)	(11,900)
	4-pt. supported						16,750* (16,750*)	26,230* (26,230*)	35,050* (38,360*)	28,430* (31,740*)	23,800* (26,890*)	20,280* (23,140*)
-10	non-supported						(18,290*)	(24,690)	(19,620)	(16,090)	(13,440)	(11,460)
	4-pt. supported						18,290* (18,290*)	26,010* (26,010*)	34,390* (37,690*)	27,770* (31,300*)	23,140* (26,670*)	19,840* (22,920*)
-15	non-supported						(20,060*)	(24,690)	(19,180)	(15,650)	(13,220)	(11,240)
	4-pt. supported						20,060* (20,060*)	26,670* (26,670*)	34,170* (36,370*)	27,550* (30,420*)	22,920* (26,010*)	19,620* (22,260*)
-20	non-supported						(19,180)	(24,690)	(19,180)	(15,650)	(13,000)	(11,240)
	4-pt. supported						27,990* (27,990*)	33,730* (33,730*)	27,330* (28,430*)	22,700* (24,470*)	19,400* (21,160*)	16,970* (18,290*)
-25	non-supported						(19,400)	(15,650)	(13,220)	(11,240)	(9,700)	(8,590)
	4-pt. supported						30,420* (30,420*)	25,790* (25,790*)	22,260* (22,260*)	19,400* (19,400*)	16,530* (16,530*)	13,880* (13,880*)

Height in m	Undercarriage stabilizers	Reach in m												
		6	7.5	9	10.5	12	13.5	15	16.5	18	19.5			
18	non-supported													
	4-pt. supported													
16.5	non-supported													
	4-pt. supported													
15	non-supported													
	4-pt. supported													
13.5	non-supported													
	4-pt. supported													
12	non-supported													
	4-pt. supported													
10.5	non-supported													
	4-pt. supported													
9	non-supported													
	4-pt. supported													
7.5	non-supported													
	4-pt. supported													
6	non-supported													
	4-pt. supported													
4.5	non-supported													
	4-pt. supported													
3	non-supported													
	4-pt. supported													
1.5	non-supported													
	4-pt. supported													
0	non-supported													
	4-pt. supported													
-1.5	non-supported													
	4-pt. supported													
-3	non-supported													
	4-pt. supported													
-4.5	non-supported													
	4-pt. supported													
-6	non-supported													
	4-pt. supported													
-7.5	non-supported													
	4-pt. supported													

■ For additional remarks see notes on page 3.

CAB

- Hydraulically height-adjustable cab with max. eye level of 20'6.2 m, independent horizontal advance of 7.2'2.2 m, human-engineered, functional design and excellent all-round visibility.
- Air-cushioned comfort seat with pneumatically adjustable lumbar support, safety belt and headrest. Seat heating available on request. The seat meets EC-safety and health requirements (Directive 89/392/EEC, Paragraph 3.2.2). Seat position, seat inclination and seat cushion multi-adjust-

- table in line with position of armrests and pilot control units.
- 3-setting fan for hot water heating, 4 adjustable defroster nozzles.
- Tilt and height-adjustable steering column; front windshield slideable under cab roof, with pull-down sunblind; lift-up skylight on cab roof.
- Air conditioning as standard.
- Sound power level (guaranteed) $LW(A) = 106 \text{ dB(A)}$.

OFFICIAL HOMOLOGATION

- Certification according to CE regulations.

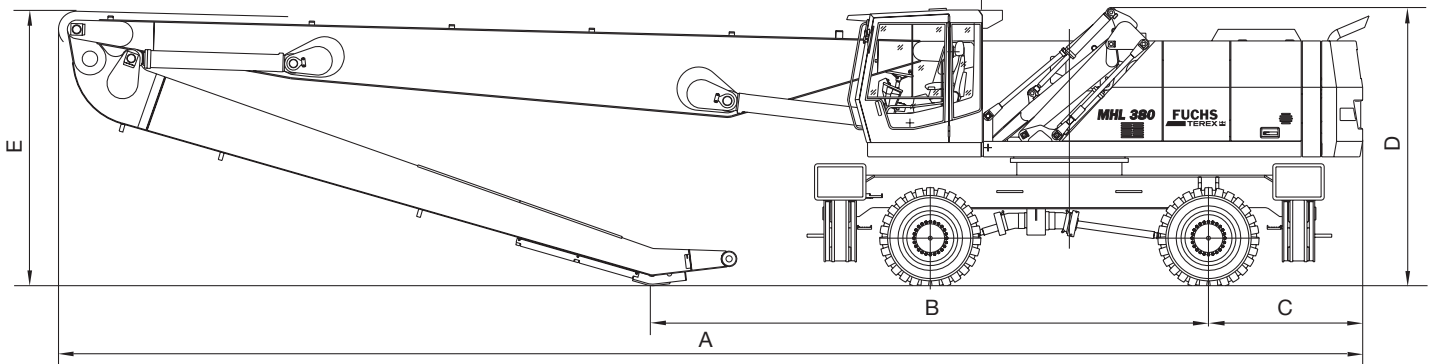
TRANSPORT DIMENSIONS

Dimension mm/in.	Reach (work equipment)		
	60.7'/18.5 m (straight)	68.9'/21.0 m (straight)	68.9'/21.0 m (monobloc)
A	590'/15.005	665'/16.880	656'/16.670
B	240'/6.085	283'/7.195	258'/6.555
C	78'/1.995	78'/1.995	78'/1.995
D	142'/3.600	142'/3.600	142'/3.600
E	124'/3.165	140'/3.555	147'/ 3.730

GRABS

- Cactus grabs (option) featuring capacities between 1.0 m³/1.3 yd³ up to 1.4 m³/1.8 yd³ in welded design, with internally toothed ring gear and welded grab jaws with wear-resistant tips.
- Clamshell grabs (option) provided according to job-site requirements.

Transport dimensions on flat-bed trailer



TEREX Fuchs

8800 Rostin Road
Southaven, MS 38671
USA

TOLL FREE: 1-888-201-6008
PHONE: 662-393-1800
FAX: 662-393-1700
WEB www.terex.com
EMAIL fuchs@fuchsus.com