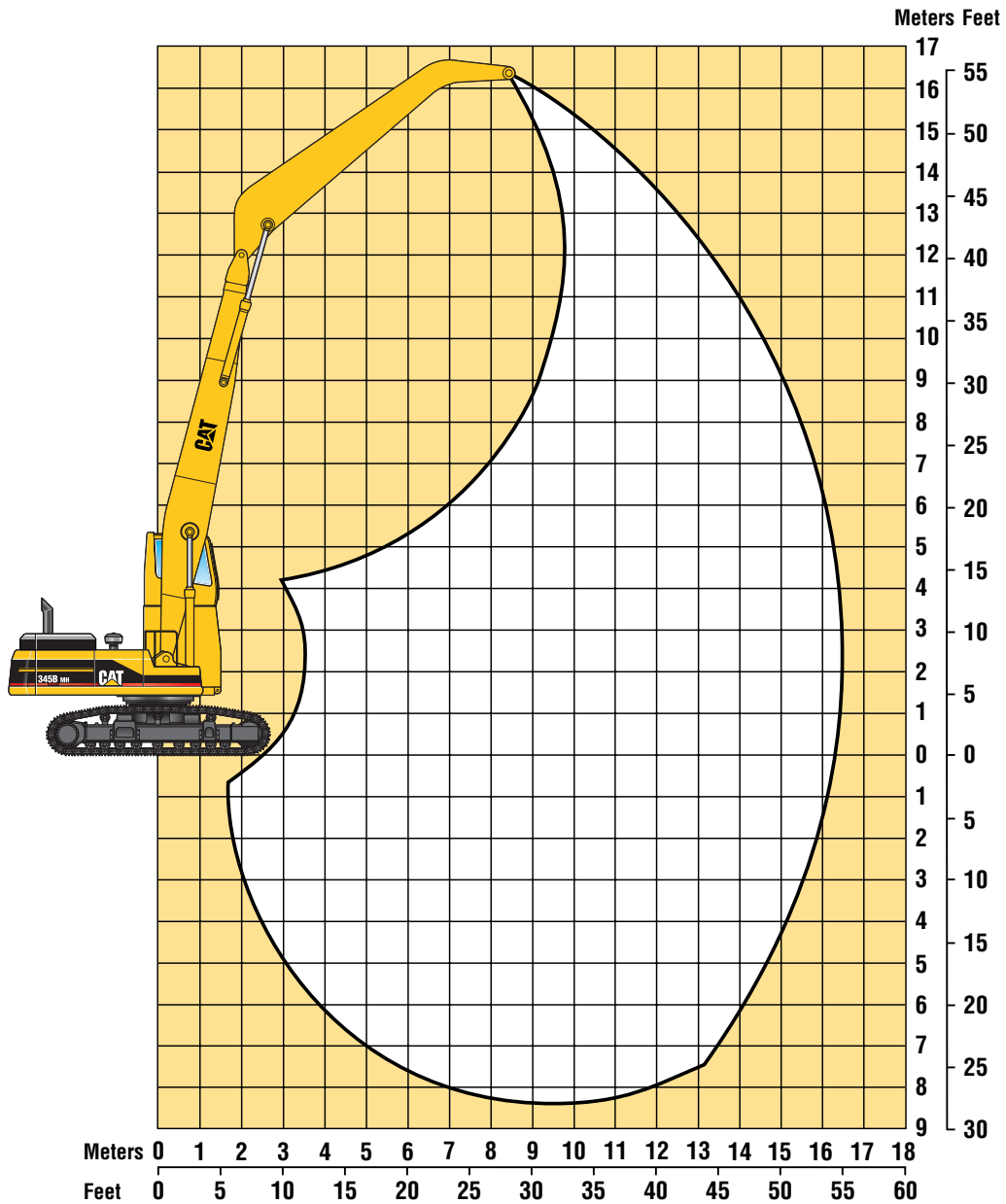


345B Series II Material Handler

Working Ranges – Two-Piece Front

Machine equipped with 16.5 m (54'0") two-piece front. Check with your Cat Dealer for other available options.

Maximum reach at 1.5 m (5'0")	16.5 m	54'0"
Maximum height at 8.4 m (27'6")	16.2 m	53'2"



345B Series II Material Handler

Lift Capacities

345B MH equipped with Cat two-piece, 16.5 m (54'0") front, 900 mm triple grouser shoes

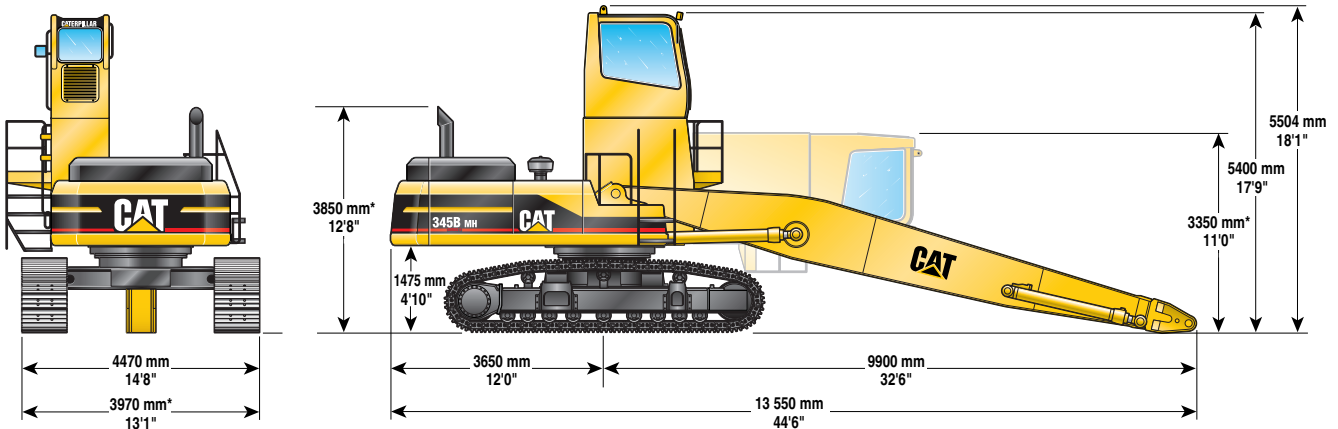


Load Point Height	3.0 m (10.0 ft)		4.5 m (15.0 ft)		6.0 m (20.0 ft)		7.5 m (25.0 ft)		9.0 m (30.0 ft)		10.5 m (35.0 ft)		12.0 m (40.0 ft)		13.5 m (45.0 ft)		15.0 m (50.0 ft)		m ft						
	kg	lb	kg	lb	kg	lb	kg	lb	kg	lb	kg	lb	kg	lb	kg	lb	kg	lb							
15.0 m 50.0 ft										*15,100	*15,100								*5700	*5700	10.16 32.30				
13.5 m 45.0 ft												*7400	*7400						*5300	*5300	11.84 36.15				
12.0 m 40.0 ft												*8300	*8300	*7100	*7100				*5000	*5000	13.13 42.60				
10.5 m 35.0 ft												*8300	*8300	*7700	*7700	*6300	*6300		*4900	*4900	14.15 46.08				
9.0 m 30.0 ft												*8400	*8400	*7700	*7700	*7200	*7200		*4900	*4900	14.94 48.80				
7.5 m 25.0 ft										*9600	*9600	*8600	*8600	*7900	*7900	7200	*6300	6000	*4900	*4900	15.55 50.88				
6.0 m 20.0 ft							*11,500	*11,500	*10,100	*10,100	*9000	*9000	*8100	*8100	*7300	7000	*6700	5900	*4900	*4900	15.99 52.39				
4.5 m 15.0 ft					*15,200	*15,200	*12,500	*12,500	*10,700	*10,700	*9300	*9300	*8300	8300	*7500	6900	6700	5800	*5100	5100	16.28 53.39				
3.0 m 10.0 ft					*22,900	*22,900	*16,800	*16,800	*13,400	*13,400	*11,200	*11,200	*9700	*9700	*8500	8000	*7500	6700	6600	5700	*5300	4900	16.43 53.90		
1.5 m 5.0 ft					*14,100	*14,100	*18,000	*18,000	*14,100	*14,100	*11,600	*11,600	*9900	9400	*8600	7800	7500	6500	6500	5600	*5500	4800	16.44 53.94		
0.0 m 0.0 ft					*9300	*9300	*18,400	*18,400	*14,400	*14,400	*11,800	11,300	*10,000	9100	*8600	7500	7400	6400	6300	5500	5600	4800	16.31 53.51		
-1.5 m -5.0 ft					*5500	*5500	*8500	*8500	*14,900	*14,900	14,000	*11,700	10,900	*9900	8800	*8400	7300	7200	6200	*6200	5400	*5400	4900	16.04 52.60	
-3.0 m -10.0 ft					*12,400	*12,400	*19,400	*19,400	*34,200	*34,200	*31,100	30,200	*25,500	23,500	*21,500	19,000	*18,300	15,800	15,600	13,400	*13,400	11,600	*12,000	10,800	15.61 51.18
-4.5 m -15.0 ft					*7100	*7100	*9200	*9200	*13,000	*13,000	*12,400	*12,400	*10,400	*10,400	*8800	8500	*7400	7100	*6200	6100	*4900	*4900			
-6.0 m -20.0 ft					*16,000	*16,000	*20,600	*20,600	*29,500	*29,500	*27,000	*27,000	*22,500	22,500	*19,000	18,400	*16,000	15,400	*13,200	13,200					
-7.5 m -25.0 ft							*9700	*9700	*12,600	*12,600	*10,700	*10,700	*9100	*9100	*7700	*7700	*6400	*6400	*5100	*5100					
							*21,800	*21,800	*27,300	*27,300	*23,200	*23,200	*19,600	*19,600	*16,500	*16,500	*13,700	*13,700	*10,700	*10,700					
							*9700	*9700	*7900	*7900	*8500	*8500	*7300	*7300	*6100	*6100	*4900	*4900							
							*20,800	*20,800	*18,300	*18,300	*15,600	*15,600	*13,000	*13,000	*10,200	*10,200									

* Indicates that the load is limited by hydraulic capacity rather than tipping capacity. Lift capacity ratings are based on SAE standard J11097. Rated loads do not exceed 87% of hydraulic lifting capacity or 75% of tipping capacity.

Dimensions

Note: Standard equipment may vary. Consult your Caterpillar Dealer for specifics.



NOTE: Track width with 750 mm (30") track shoes.

*Requires removal of exhaust extension group, handrail group on right-hand side of toolbox, ladder, walkway and handrail assemblies attached to left-hand side of cab riser group. Retracted gauge for shipping purposes only.