

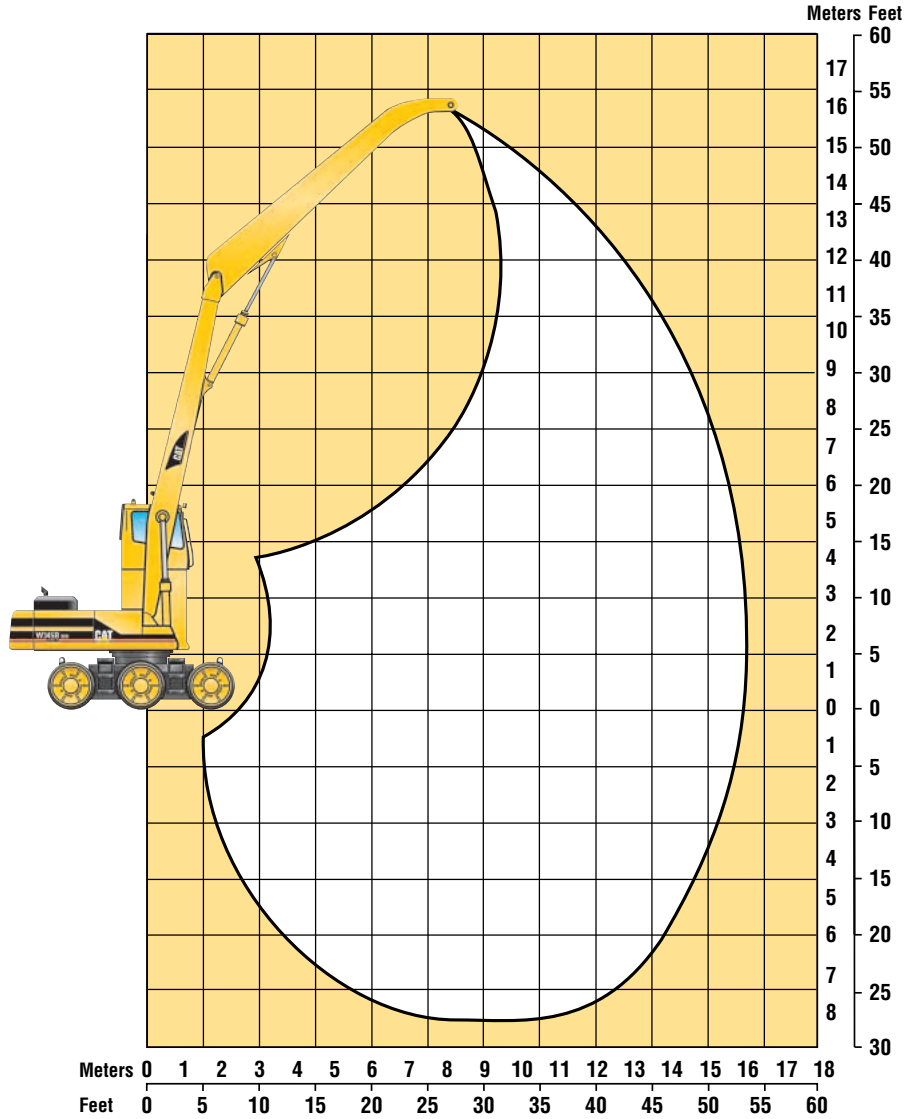
W345B Series II Wheeled Material Handler

Working Range/Lift Chart — Two-Piece Front

Machine equipped with 16.5 m (54'0") Cat two-piece MH front.

Lift is hydraulically limited through 360° rotation.

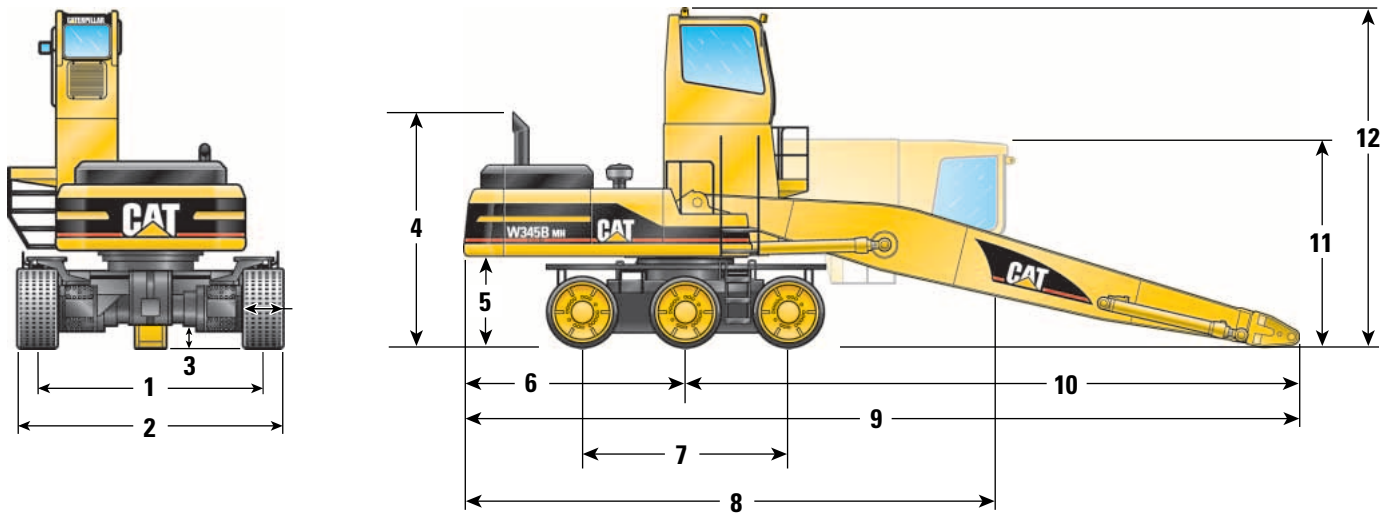
Maximum horizontal reach	16.5 m	54'0"
Maximum height at 9.75 m (32'0")	16.7 m	54'8"



W345B Series II Wheeled Material Handler

Dimensions

All dimensions are approximate.



	mm (ft)
1 Centerline of Tire to Centerline of Tire	3764 (12'4")
2 Operating Width – outside of tires	4614 (15'2")
3 Ground Clearance	249 (11.2")
4 Height to Top of Exhaust	4206 (13'10")
5 Counterweight Clearance	1831 (6'0")
6 Tail Swing Radius	3650 (12'0")
7 Wheel Base	4032 (13'3")
8 Rear of Carrier to Tipped Cab	8232 (27'0")
9 Rear of Carrier to End of Boom	13 550 (44'6")
10 Swing Center to End of Boom	9900 (32'6")
11 Shipping Height – cab tipped	3706 (12'2")
12 Operating Height – to top of cab	5860 (19'3")

W345B Series II Wheeled Material Handler

Lift Capacities

W345B II MH with Cat two-piece, 16.5 m (54'0") front



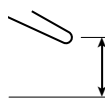

Load at Maximum Reach



Load Radius Over Front



Load Radius Over Side

		3.0 m/ 10.0 ft		4.5 m/ 15.0 ft		6.0 m/ 20.0 ft		7.5 m/ 25.0 ft		9.0 m/ 30.0 ft		10.5 m/ 35.0 ft		12.0 m/ 40.0 ft		13.5 m/ 45.0 ft		15.0 m/ 50.0 ft				m ft						
		kg lb	kg lb	kg lb	kg lb	kg lb	kg lb	kg lb	kg lb	kg lb	kg lb	kg lb	kg lb	kg lb	kg lb	kg lb	kg lb	kg lb	kg lb	kg lb	kg lb							
15.0 m 50.0 ft	kg lb												*6000								*5500 *12,300	10.8 34.4						
13.5 m 45.0 ft	kg lb												*8000 *16,700	*5800								*5200 *11,500	12.3 39.8					
12.0 m 40.0 ft	kg lb												*8200 *18,100	*7700 *15,900	*5000							*5000 *11,100	13.5 43.9					
10.5 m 35.0 ft	kg lb												*8300 *18,200	*7700 *16,900	*6900 *13,900							*4900 *10,800	14.4 47.1					
9.0 m 30.0 ft	kg lb												*8500 *18,500	*7800 *17,100	*7200 *15,800							*4900 *10,800	15.2 49.6					
7.5 m 25.0 ft	kg lb												*9700 *21,200	*8700 *19,100	*7900 *17,400	*7300 *15,900							*4900 *10,800	15.7 51.4				
6.0 m 20.0 ft	kg lb												*11 800 *25,800	*10 300 *22,400	*9100 *19,800	*8200 *17,800	*7400 *16,100							*5000 *11,000	16.1 52.8			
4.5 m 15.0 ft	kg lb												*20 700 *44,800	*15 700 *34,200	*12 800 *27,900	*10 900 *23,600	*9400 *20,600	*8400 *18,200	*7500 *16,300	*6700 *14,700	6700 14,500			*5100 *11,300	16.3 53.6			
3.0 m 10.0 ft	kg lb												*23 800 *51,500	*17 300 *37,600	*13 700 *29,800	*11 400 *24,800	*9800 *21,300	*8500 *18,600	*7600 *16,500	*6700 *14,600	6600 14,200			*5300 *11,800	16.4 54.0			
1.5 m 5.0 ft	kg lb												*11 500 *26,800	*18 300 *39,700	*14 300 *31,100	*11 700 *25,600	*10 000 *21,700	*8600 *18,800	*7500 *16,400	*6600 *14,400	6500 14,000			*5600 *12,400	16.4 53.9			
0.0 m 0.0 ft	kg lb												*8900 *20,200	*17 600 *40,000	*14 400 *31,500	*11 800 *25,800	*10 000 *21,700	*8600 *18,600	*7400 *16,100	*6400 *13,900	6400 13,800			*5600 *12,300	16.2 53.3			
-1.5 m -5.0 ft	kg lb												*5800 *19,300	*8500 *19,300	*14 100 *32,800	*14 100 *30,700	*11 600 *25,300	*9800 *21,200	*8300 *18,100	*7100 *15,500							*5400 *11,900	15.9 52.2
-3.0 m -10.0 ft	kg lb												*6600 *14,900	*8900 *19,900	*13 100 *29,900	*13 200 *28,800	*11 000 *23,900	*9300 *20,100	*7900 *17,000	*6700 *14,300							*5100 *11,200	15.4 50.6
-4.5 m -15.0 ft	kg lb												*7400 *16,500	*9300 *21,000	*13 000 *29,500	*11 900 *25,800	*10 000 *21,700	*8400 *18,300	*7100 *15,300	*5900 *12,500							*4700 *10,400	14.8 48.4
-6.0 m -20.0 ft	kg lb												*9900 *22,200	*11 700 *25,300	*10 000 *21,700	*8600 *18,400	*7200 *15,500	*6000 *12,700	*4600 *9,600							*4200 *9,200	14.0 45.5	
-7.5 m -25.0 ft	kg lb												*7700 *16,300	*6600 *14,000	*5500 *11,500	*4300												

* Indicates that the load is limited by hydraulic capacity rather than tipping capacity. Lift capacity ratings are based on SAE J/ISO 10567 standard. Rated loads do not exceed 87% of hydraulic lifting capacity or 75% of tipping capacity.